



SOLE AGENTS FOR A.R.B TRAILERS IN UK & IRELAND



New A.R.B Tri-axle Stepframe Extendable Multi-Purpose Plant & Machinery Trailer Model SPM UK 7



- Length 13.6m + 5.35m Extension
- Air Suspension with Raise and Lower Facility
- Top Deck Ramps
- Front Lift axle
- Self Tracking Rear Axle
- Outriggers
- 235 /75R/17.5 Wheels & Tyres
- Double Hydraulic Flipover Ramps
- Twistlocks for 20ft and 40ft ISO Containers

47 Tonnes GTW

Price **£POA** Ex Works

A.R.B

MODEL SPM UK 7 TECHNICAL SPECIFICATION

DESCRIPTION

A.R.B. TRI-AXLE STEPFRAME MULTI-PURPOSE LOW LOADING PLANT AND MACHINERY TRAILER WITH EXTENDING BED (5.35M)

APPROXIMATE PAYLOADS

NORMAL C&U	GROSS:	41,000KGS
	AXLES:	8,000KGS
	KINGPIN:	15,000KGS
	PAYLOAD:	24,000KGS (DEPENDING ON TRACTOR)
CAT 2	GROSS:	47,000KGS
	AXLES:	10,000KGS
	KINGPIN:	17,000KGS
	PAYLOAD:	34,500KGS (DEPENDING ON TRACTOR)

SPECIFICATION

13.6m LONG + 5.355m EXTENSION

2.55M WIDE

965MM RIDE HEIGHT

3.5M POWER OPERATED FLIPOVER HYDRAULIC RAMPS

OUTRIGGERS

BEAVER TAIL

TWISTLOCKS FOR 20FT AND 40FT CONTAINERS

TYRES -235/75R/17.5

LIGHTS - EEC STANDARD 24 VOLTS

BRAKES -EEC STANDARD TWO LINE AIR LOAD SENSING VALVE
WITH SPRING LOCK PARKING BRAKE
-ABS SYSTEM

RUNNING GEAR & AXLES

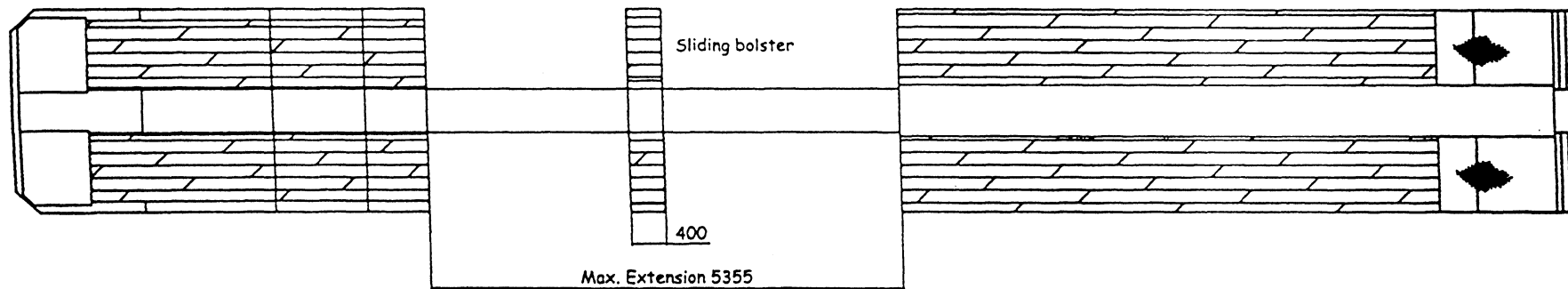
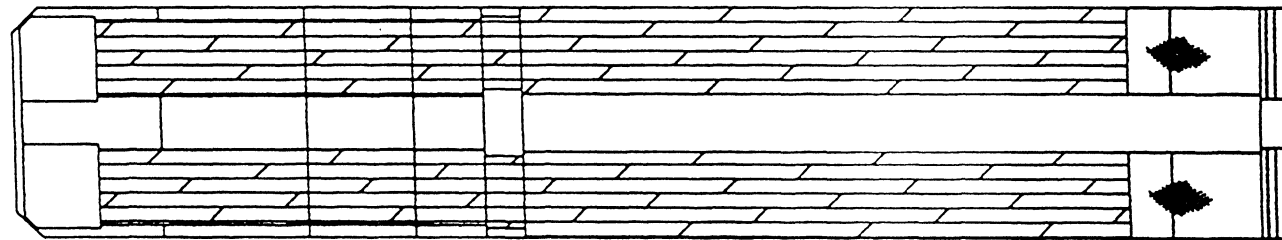
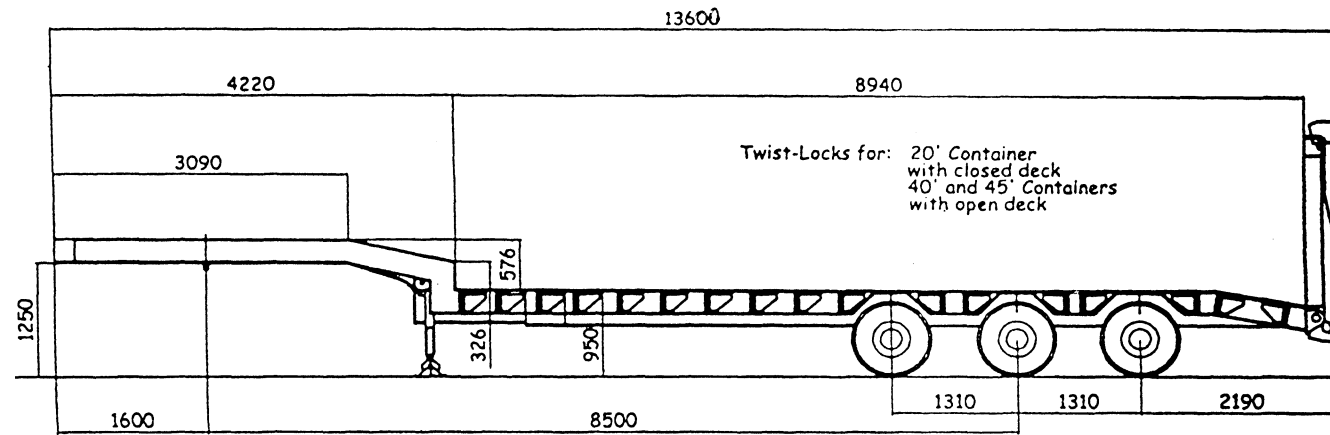
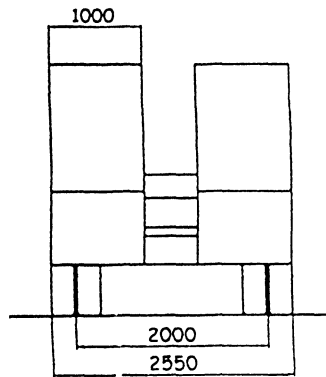
-ROR 10 TONNE

-SELF TRACKING REAR AXLE

-MERITOR 11TONNE AIR SUSPENSION WITH

RAISE/LOWER FACILITY & RIDE HEIGHT SENSING VALVE

-LIFT AXLE ON FRONT



FABREQUIPA		Soc. Industrial de Equipamento Rodoviário, Lda.			
Sete Portais - Taíbe - 2830 Sta. André BRR - Portugal					
Telef: 351-1-2148320 / Telef/Fax: 351-1-2169474					
Designação		Quantidade			
Material	21 03 1	Preço unit.	27	7	00
Valor	5204 17000	Valor total			
Código		Substituição			
Nota		Observações			
Equip.	Sociedade SA				Documento Nº
SPM 3D / Ext. - UK VII					FH - 047