

Precise levelling and reliable stabilisation is achieved by the deployment of Oldbury jacks, supplied to meet the performance and safety requirements demanded by a wide range of applications.



JACKS

30 TONNES MECHANICAL JACK

- **Fully enclosed ratchet operated head**
- **Screw 'Lockout' device** eliminates movement between inner and outer legs of the jack caused by plant vibration
- **Infinitely variable** height positions may be set within the jack stroke

*JMBO 30 Mechanical jack
shown with optional spreader*



JMBO 30H Hydraulic jack

30 TONNES HYDRAULIC JACK

- **Automatic ratchet locking mechanism** and support eliminates the need for separate locking pins to protect jack hydraulics from equipment vibration.
- When the required height is achieved, the ratchet mechanism engages, leaving the ram under zero load.

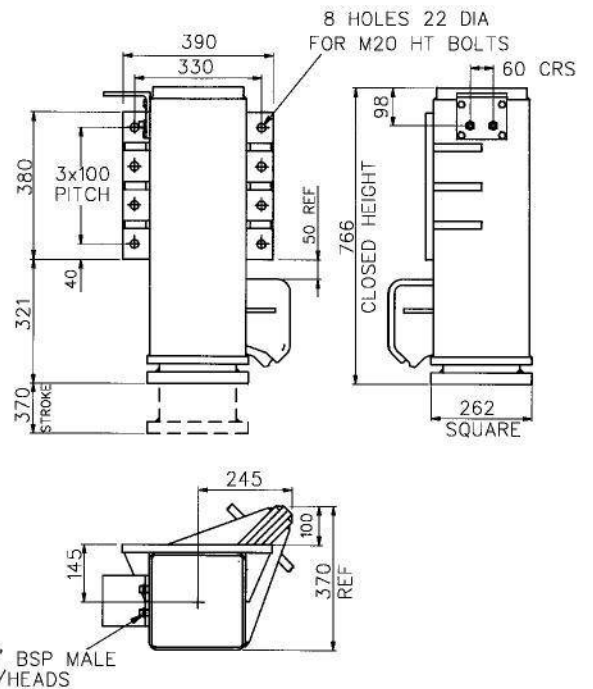
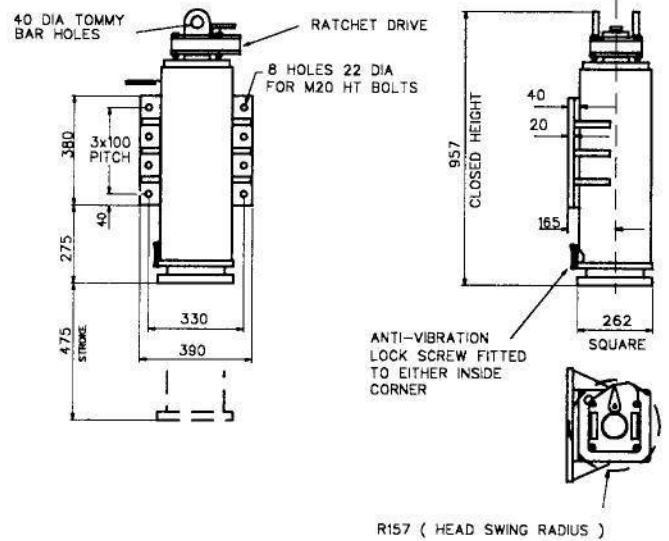
JMBO30 MECHANICAL JACK

	DYNAMIC	STATIC
Maximum load	30 tonnes (15 static+15 dynamic)	30 tonnes
Lift capacity	15 tonnes	
Torque input to lift 15 tonnes	166 kg/m (1200 lb/ft)	
Weight	220 kg	



Optional spreader plate

It is strongly recommended that a spreader plate is purchased with each jack.



JMBO30H HYDRAULIC JACK

	DYNAMIC	STATIC
Maximum load	30 tonnes (15 static+15 dynamic)	30 tonnes
Lift capacity	15 tonnes	
Operating pressure	185 Bar (2700 psi)	
Weight	205 kg	

NB: It is the responsibility of the customer to fit a pressure relief valve in the hydraulic supply to the jack.

